

Timy Driver Update

Unluckily the API of the new USB driver is not compatible to the old one. To use the new versions of the programs (ComToFile from V 2.75, Timy USB Update from V0.3) you have to make a driver update.

ATTENTION:

If there are old versions of this programs are installed, you have to remove them first. Go to Start/Settings/Control Panel/Add/Remove Programs and click “remove” on the corresponding program.

It is not possible to use old and new versions of this programs.

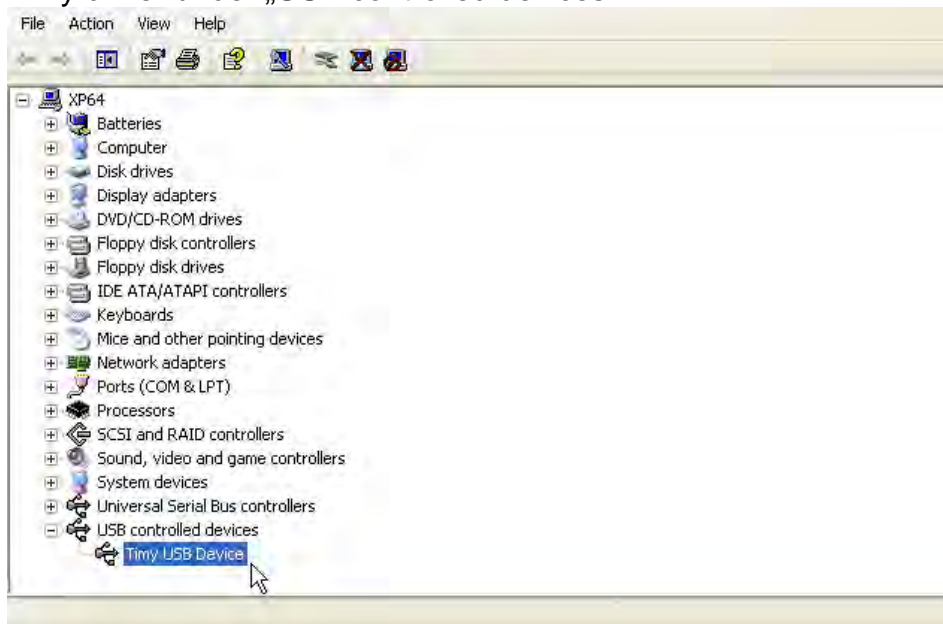
Remember: New driver – new software. Old driver – old software

Note:

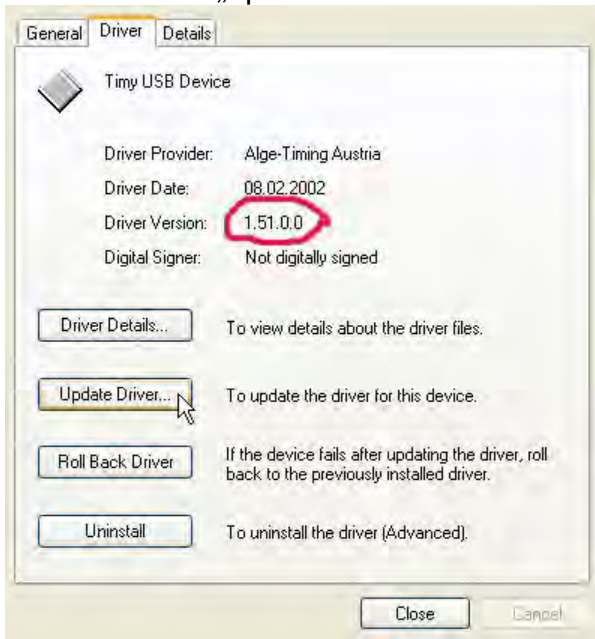
With the software installation of this programs there will be a automatic driver installation. After removing the old versions, you should install the new ones. This will make the driver installation easier.

For the installation you need administrator rights!

1. Connect the Timy to a free USB port.
2. Go to: Start/Settings/Control Panel/System/Device Manager. You can find the Timy driver under „USB controlled devices“.



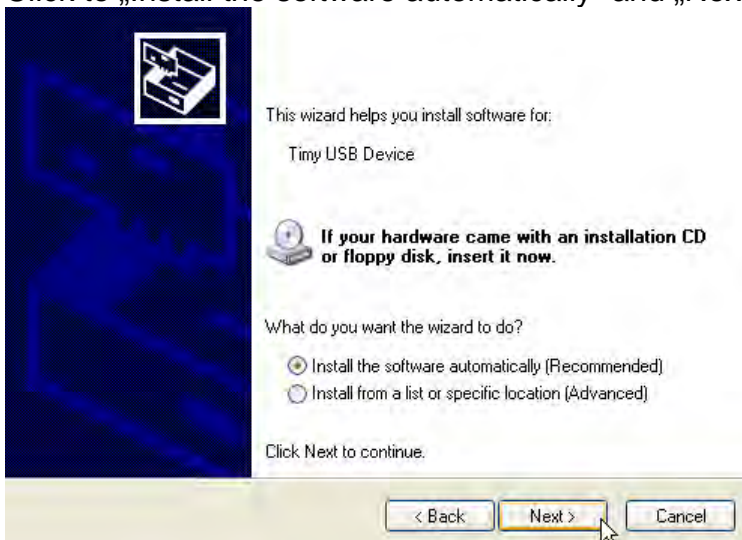
3. If there is still the old driver installed, Put your ALGE CD into your CD-ROM drive and click „update driver“.



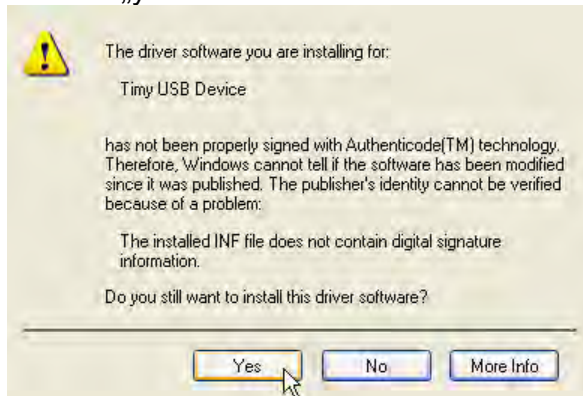
4. Click to „No“ and then „Next“



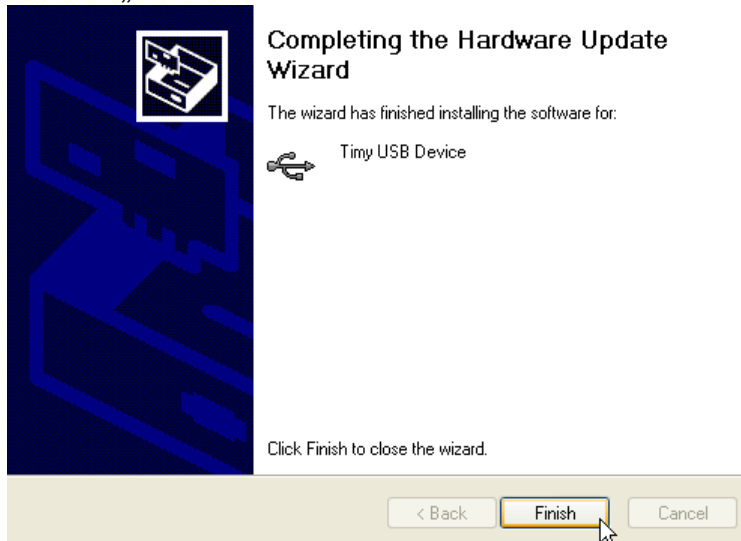
5. Click to „Install the software automatically“ and „Next“



6. Click to „yes“ otherwise driver will not be installed!



7. Click to „Finish“



8. Driver version should show 2.41.0.0. Click to „OK“.



Now the new driver can be used.