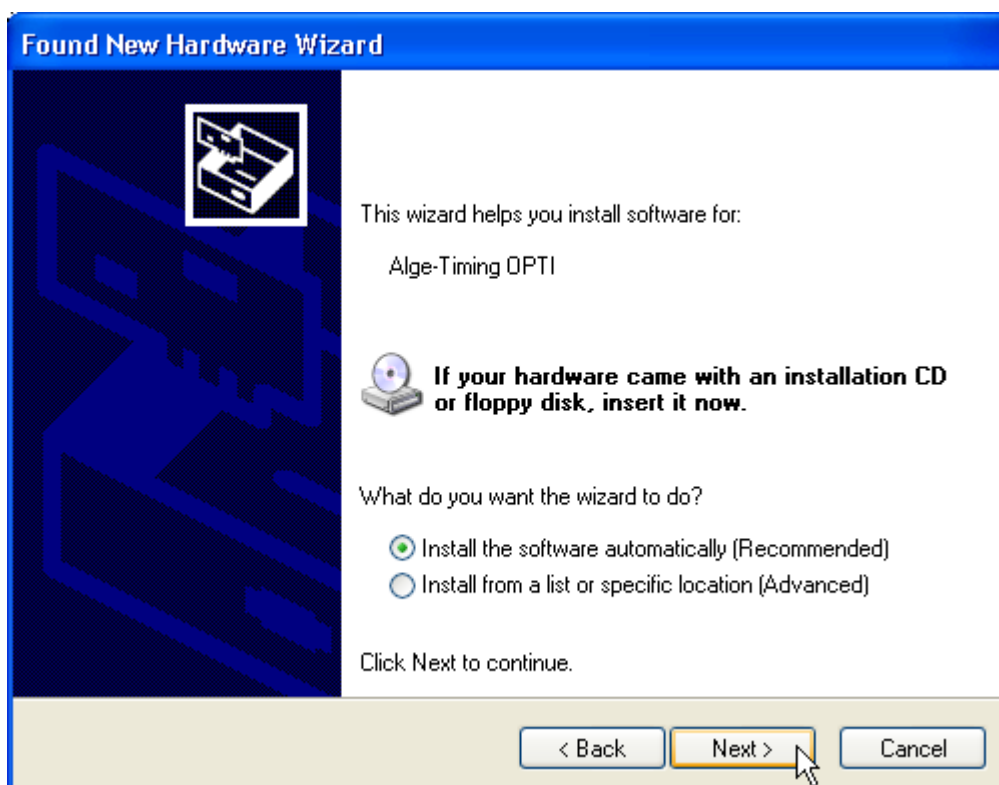


OptiC 1394 driver installation

1. Insert Alge CD. Connect Optic to your 1394 OHCI card and switch on. Please wait until Windows had finished searching for the driver. Following picture should appear. First the Port driver will be installed. Click “No, not yet” and next.



2. Click next



3. Click finish.



4. You can check correct driver installation at: Start/settings/control panel/system/hardware/device manager.

